

Eco-Alto Series UPS

ECO-ALTO0600

eco-Alto

FEATURES

- Ergonomic design
- Australian output plugs
- Wide input voltage range
- Boost and buck AVR
- Compatible with generators
- Audible alarms function
- Full-time surge protection
- Automatic diagnostic on startup
- Cold start function
- Intelligent battery management
- Automatic restart when mains returns
- USB communication
- Supplied with intelligent monitoring and control software
- Protection against short circuit and low battery voltage



Camera Surveillance



Point of Sale



Telephone Systems



Computer



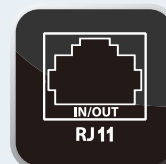
Peripherals



MICRO
PROCESSOR



BATTERY
HIGH/LOW
PROTECTION



IN/OUT
RJ11

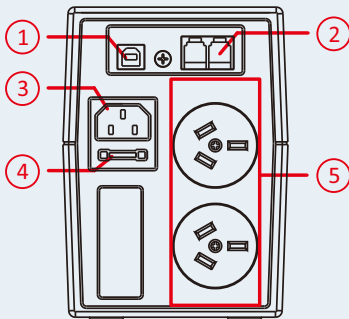


USB

SPECIFICATIONS

Model	ECO-ALTO0600
Capacity	600VA/360W
Input	
Voltage	230/240V
AVR voltage range	162V-290V
Frequency range	40Hz-70Hz
Output	
Voltage regulation	Batt. mode: 230V ± 10%
Frequency	50 Hz ± 1Hz
Waveform	AC mode: sine wave; Battery mode: simulated sinewave
Transfer time	Typical 2-6ms
Battery	
Type	Sealed lead acid, maintenance free
Configuration	1 x 12V/7AH
Charge current(Max)	1.2A
Backup time	> 6 minutes load dependent
Recharge	6-8 hours to 90% capacity after complete discharge
Function	
Communication	USB
Surge protection	RJ11
DC start	Yes
Auto restart	Yes
AVR	Yes
Surge protection	720 Joules / 30000A
Input protection	EN50091-2 (C-Tick)
Short circuit	User replaceable fuse
LED indication & audible alarms	AC mode, battery charging, battery mode, battery low, over temperature, overload, short circuit
Environment	
Audible noise	< 40dB
Temperature	0 - 40 Degrees C(non-condensing)
Humidity	0 - 90%
Physical	
Australian outlets	2
Dimensions (HxWxD)	140x95x300mm
Net weight	4.25Kg

BACK PANELS



600VA

- 1 - USB communication port
- 2 - RJ11 surge protection
- 3 - IEC input
- 4 - User replaceable fuse
- 5 - Output sockets

RUNTIME IN MINUTES

Load VA/W	100VA 60W	200VA 120W	400VA 240W	500VA 300W	600VA 360W
ECO-ALTO0600	39	28	14	9	6